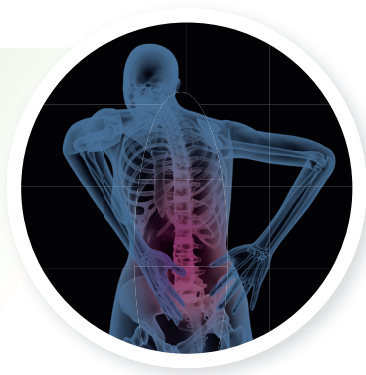


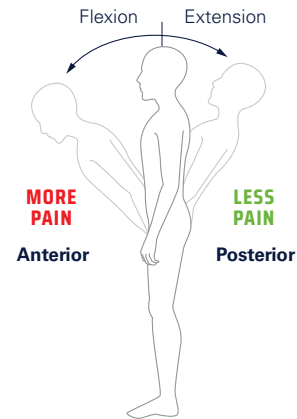


DETERMINING DISCOGENIC LOW BACK PAIN

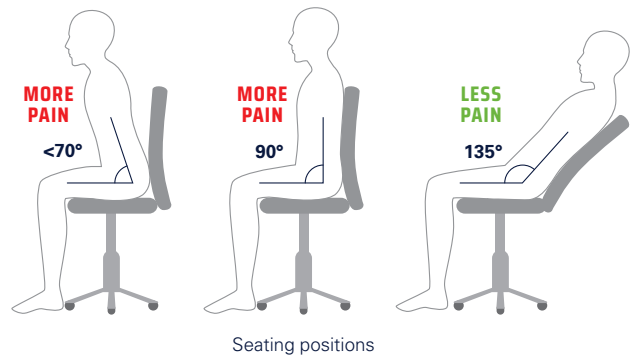
1. Does your patient have low back pain?



2. Does your patient have low back pain when leaning forward in a standing position?

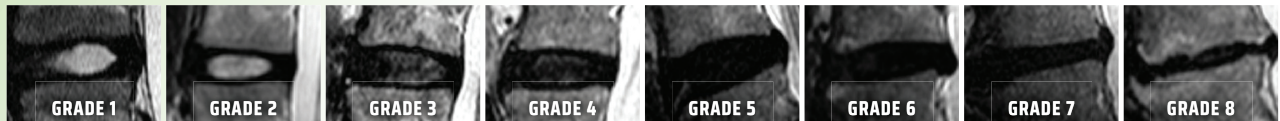


3. Does your patient have low back pain while sitting?



Does your patient have imaging that shows disc degeneration?

4.



1. Griffith, J. E., Wang, Y. X., Antonio, G. E., Choi, K. C., Yu, A., Ahuja, A. T., & Leung, P. C. (2007). Modified Pfirrmann grading system for lumbar intervertebral disc degeneration. Spine, 32(24), E708–E712. <https://doi.org/10.1097/BRS.0b013e31815a59a0>